



## Xenon Suchscheinwerfer / Xenon Searchlight

## IM400RCX



Control Panel



<b>Gehäuse</b>	Material: Edelstahl und seewasserfestes Aluminium. Parabolspiegel Frontglas: Gehärtetes Glas Dichtung: Silikon/Gummi Dichtung Betriebstemperatur: -40°C/+ 40°C	<b>Housing</b>	Stainless steel and seawater resistant aluminium glass parabolic mirror reflector Toughened frontglass Silicon rubber gaskets Operating temp.: -40°C/+ 40°C
<b>Abmessungen</b>	Höhe: 877mm Breite: 460mm Gewicht: 56 KG	<b>Dimension</b>	Height: 877mm Wight: 460mm Weight: 56 KG
<b>Elektrische Daten</b>	Spannung:230V AC Spannung Motor: 24V DC Kabel: H07RN-F Durchmesser: 6-12mm	<b>Electrical</b>	Lamp voltage:230V AC Motor Voltage: 24V DC Preferred cable type: H07RN-F Cable diameter: 6-12mm
<b>Spiegel</b>	Parabolspiegel 380mm	<b>Optics</b>	Parabolic mirror reflector 380mm
<b>Heizung</b>	230V AC	<b>Heater</b>	230V AC
<b>Schutzart</b>	IP54	<b>Protection class</b>	IP54
<b>Motor Unit</b>	Hoch/Runter: +30° / -30° Drehbereich: 360°	<b>Motor unit</b>	Tilt: +30° / -30° PAN: 360°

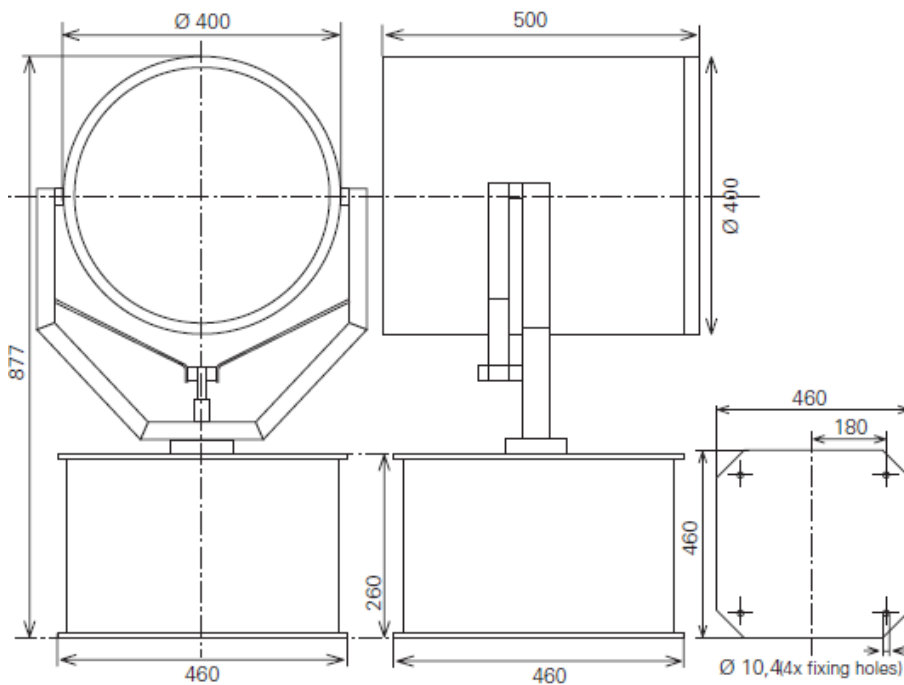


## Xenon Suchscheinwerfer / Xenon Searchlight

## IM400RCX

Type	Part No:	Voltage (Volt)	Power (Watt)	Socket	Focus Beam angle	Range 1 lux (m)	Covered area d=m	Luminous intensity cd	Bulb model
IM400RCX	001-092	230V	1000	N/A	optional	6700m	180	45x10 6cd	Osram 6200K

### Dimension drawings



### Control Panel

